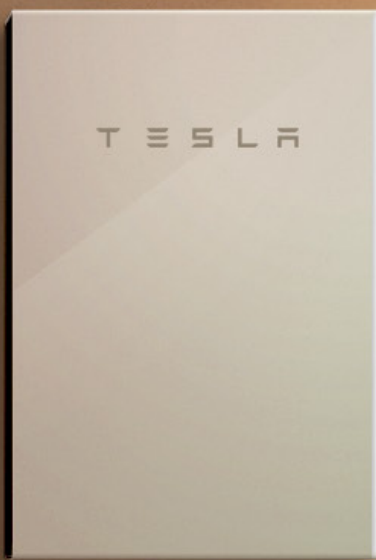


POWERWALL

TESLA HOME BATTERY



Join the world's transition to sustainable energy

Powerwall is Tesla's revolutionary home battery that stores the sun's energy and intelligently delivers this clean, reliable electricity when the sun isn't shining. Combine Powerwall with solar to increase your home's independence, reduce electricity bills and create a sustainable lifestyle.



Use more of your solar

Most homes use a fraction of the solar energy they produce. Instead of sending it back to the grid, Powerwall stores it for later use.



Your path off grid

Power your home with the solar energy stored in Powerwall to reduce your reliance on the grid and lower your electricity bill.



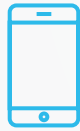
Backup your home

Powerwall protects your home during a power outage, keeping your lights, Wi-Fi and refrigerator running.



A complete home energy solution

Powerwall's lithium ion battery inherits Tesla's proven automotive battery technology to power your home safely and economically. An integrated inverter reduces external components, which simplifies and lowers installation costs. Powerwall is a completely automated system that requires no maintenance.



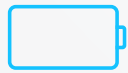
Always Connected

Monitor your solar use in real-time and receive alerts when Powerwall is preparing for severe weather.



Touch-safe

Many batteries have live wires and hot bulky parts. Powerwall is compact and touch safe for the entire family.



Long life

Powerwall is the only home battery with liquid cooling controls, maximizing battery life and safety.



Affordable

Powerwall economically meets the daily energy needs of most homes at one of the lowest cost per kWh.



Weather proof

Powerwall is water resistant, can be installed indoors or outdoors, and operates between -20 C to 50 C.



Flexible installation

Powerwall can be a wall-mounted or floor-mounted. Up to nine Powerwall units can be stacked and connected.

Technical Specs

Capacity

13.5 kWh

Operating Temperature

-20°C to 50°C

Power

7kW peak / 5kW continuous

Installation

Floor or wall mounted
Indoor or outdoor

Scalable

Up to 9 Powerwalls

Round Trip Efficiency

91.8%

Weight

120 KG

Depth of Discharge

100%

Dimensions (L x W x H)

1150 mm x 755 mm x 155 mm

Supported Applications

Solar self-consumption
Time of use load shifting
Backup
Off grid

www.tesla.com/powerwall

TESLA